

ESNI **EUROPEAN**
School of Neuroimmunology

A continuous Educational Programme
from Basic Immunology to Clinical Neuroimmunology

PROFILE 2020

ABOUT US

Gianvito Martino
(for the Scientific Committee)

It is a pleasure to introduce this new, exciting and challenging European initiative. We hope that it will contribute to the growing recognition of the role of the immune system in causing neurological disorders, and of the resulting new approaches to treatment. Because of the tremendous advances in these areas, we feel that an educational programme, spanning from basic immunology to clinical neuroimmunology, will guarantee that European researchers can be educated in the field and keep abreast of new developments. After discussing with representatives from several different European countries, two priorities for the European School for Neuroimmunology (ESNI) were established in 1999.

First, the organisation of educational courses every year; and second, the establishment of a network of laboratories offering placements for visiting personnel. With respect to the first priority, we are organizing yearly educational courses which usually take place in September every year. ➡

From previous page

**SINCE 2010, ESNI
HAS BEEN THE OFFICIAL SCHOOL
OF THE INTERNATIONAL SOCIETY
OF NEUROIMMUNOLOGY (ISNI)**

Official website: www.isniweb.org

The courses are organised around lectures given by well recognised scientists, and focus on basic and applied neuroimmunology. Care has been taken to ensure that a large part of the meeting is dedicated to basic immunology. Participation in the educational courses is open with no restrictions. With respect to the second priority of the ESNI school, namely creating a lab network for exchanging personnel to train in neuroimmunology, the aim is for those people involved in the school to provide the lab framework that covers the majority of the technical and theoretical aspects of basic and applied neuroimmunology. The laboratories, which have many years of experience in most aspects of the theory and practice of neuroimmunology, are willing to host visiting scientists for periods of time that can vary. Proposals from all different European countries are welcome. The ESNI represents the framework in which to create a continuous educational programme in neuroimmunology. We hope that you will participate in this new initiative, and contribute to the growth of neuroimmunology in Europe.

ESNI Co-ordinators

Gianvito Martino | Italy
Hugh J. Willison | UK

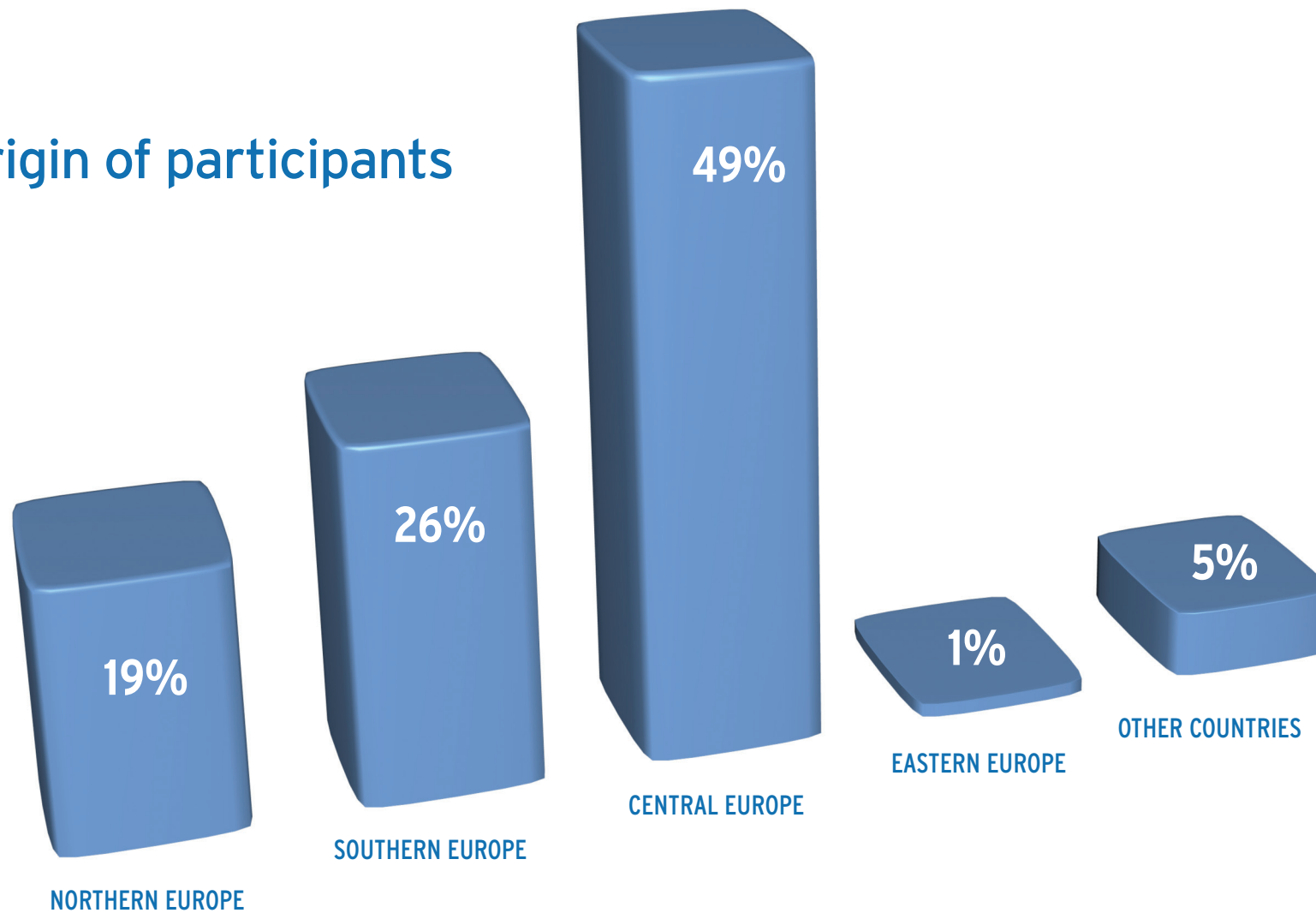
Board Members

Altintas, Ayse | Turkey
Amor, Sandra | The Netherlands
Battistini, Luca | Italy
Becher, Burkhard | Switzerland
Bradl, Monika | Austria
Comabella, Manuel | Spain
Furlan, Roberto | Italy
Grigoriadis, Nikolas | Greece
Jagodic, Maja | Sweden
Karabudak, Rana | Turkey
Karussis, Dimitrios | Israel
Leite, Isabel | Portugal
Liblau, Roland | France

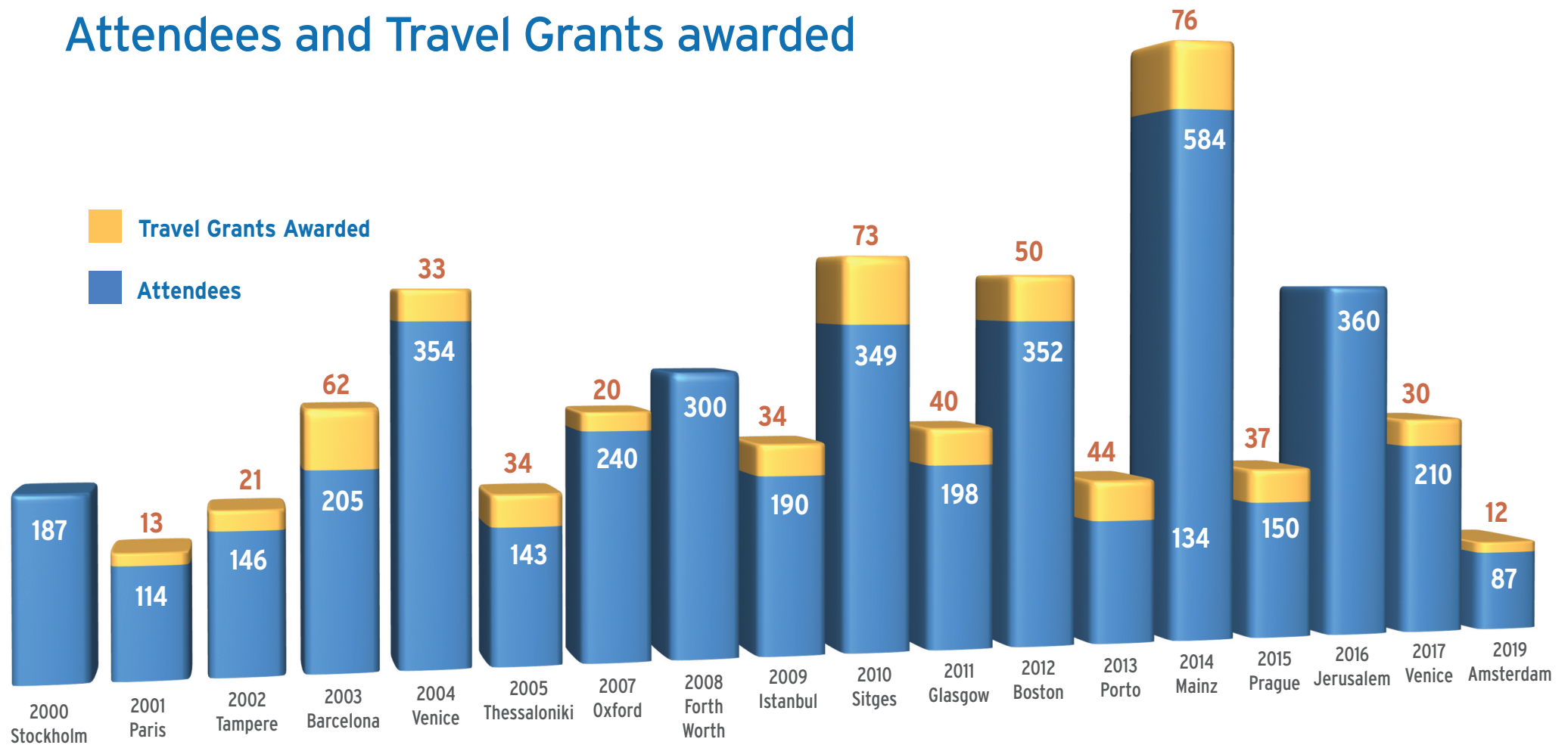
Miljkovic, Djordje | Serbia
Nataf, Serge | France
Owens, Trevor | Denmark
Probert, Lesley | Greece
Sá, Maria José | Portugal
Schwartz, Michal | Israel
Somers, Veerle | Belgium
Stourac, Pavel | Czech Republic
Uccelli, Antonio | Italy
Vedeler, Christian | Norway
Vincent, Angela | UK
Woodroffe, Nicola | UK



Origin of participants



Attendees and Travel Grants awarded





1st ESNI COURSE

Stockholm, Sweden



7th ESNI COURSE

Oxford, UK



13th ESNI COURSE

Porto, Portugal



2nd ESNI COURSE

Paris, France



8th ESNI COURSE

Fort Worth, Texas



14th ESNI COURSE

Mainz, Germany



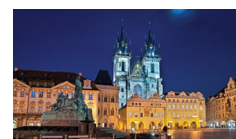
3rd ESNI COURSE

Tampere, Finland



9th ESNI COURSE

Istanbul, Turkey



15th ESNI COURSE

Prague, Czech Republic



4th ESNI COURSE

Barcelona, Spain



10th ESNI COURSE

Barcelona, Spain



16th ESNI COURSE

Prague, Czech Republic



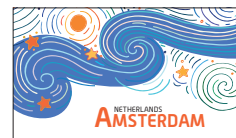
5th ESNI COURSE

Venice, Italy



11th ESNI COURSE

Glasgow, Scotland



17th ESNI COURSE

Amsterdam, Netherlands



6th ESNI COURSE

Thessaloniki, Greece



12th ESNI COURSE

Boston, USA

Course Topics

1st ESNI COURSE

Stockholm, Sweden 13-16 Sep. 2000

- Inflammation
- Immunoregulation
- Immunotherapy
- Genetics

2nd ESNI COURSE

Paris, France 27-30 Jun. 2001

- Protective vs. detrimental autoimmunity
- Neuroimmune interplay
- Immunotherapy
- Stem cell. therapy

3rd ESNI COURSE

Tampere, Finland 11-14 Sep. 2002

- Regulatory immune responses in the nervous system
- Humoral factors
- Neuroinflammation
- Neuroimmunopharmacology

4th ESNI COURSE

Barcelona, Spain 28 Sep. - 1 Oct. 2003

- Innate immunity and brain functions
- Neurodegeneration and immunoregulation - Relevance of autoantibody research in neuroimmunology
- Immunotherapies in neuroimmunology

5th ESNI COURSE

(pre-congress of the 7th ISNI congress) Venice, Italy 27-28 Sep. 2004

- From Basic to Clinical Neuroimmunology

6th ESNI COURSE

Thessaloniki, Greece 12-15 Sep. 2005

- Methods in neuroimmunology

- Immunointervention
- Genetics
- Infection and autoimmunity

7th ESNI COURSE | Oxford, UK 20-23 Sep. 2007

- Methods in neuroimmunology
- Immunointervention
- Genetics
- Infection and autoimmunity

8th ESNI COURSE

(pre-congress of the 9th ISNI congress Fort Worth, Texas, 26 October 2008)

- From Basic to Clinical Neuroimmunology

9th ESNI COURSE | Istanbul, 1-4 September 2009

- Neuroscience and neurobiology: basic aspects
- Basic and clinical aspects of neuroinflammation
- Basic and clinical aspects of immune-mediated neuromuscular disorders
- Pathogenesis and therapy of multiple sclerosis

10th ESNI COURSE

(pre-congress of the 10th ISNI congress Barcelona, Spain, 26 October 2010)

- From Basic to Clinical Neuroimmunology

11th ESNI COURSE | Glasgow, 4-7 July 2011

- Neuroinflammation and cellular responses in the CNS
- Genetics, Environmental factors and neuroinflammation
- Disease Mechanisms and treatment strategies
- Humoral effector mechanisms in neurology
- Innate mechanisms and treatment strategies
- Stem cells and neuroinflammatory disease

12th ESNI COURSE

(pre-congress of the 11th ISNI congress Boston, USA, 4-8 November 2012)

- From Basic to Clinical Neuroimmunology

13th ESNI COURSE | Porto, Portugal 3-6 July 2013

- How to achieve success in clinical and laboratory research into neuroimmunology
- The influence of age, ethnicity and environment in Neuroimmunology
- New immunomodulatory treatments for MS - from the pharma lab to the patients
- Neuroimmunology and eyes / vision, cognition and behaviour, and systemic autoimmune diseases
- Imaging and neuroimmunological diseases
- Translational research - research questions

14th ESNI COURSE

(pre-congress of the 12th ISNI congress Mainz, Germany, 9 - 13 November 2014)

- From Basic to Clinical Neuroimmunology

15th ESNI COURSE

Prague, Czech Republic 1 - 4 June 2015

- Innate immune system and glia
- Adaptive immune responses in the CNS- T cells
- Adaptive immune responses in the CNS- B cells
- Disease

16th ESNI COURSE | Venice, Italy 26 - 30 June 2017

- Microbiota, Brain and Immunity
- Genetics and CNS Autoimmunity
- Pathogenic Mechanisms of Neuroinflammatory Disorders
- Pathogenic Mechanisms of Neurodegenerative Disorders
- Cognitive and Mood Disorders
- Novel Therapeutic Strategies

17th ESNI COURSE

Amsterdam, Netherlands 16 - 19 July 2019

- Technology
- Immunology
- Neurology
- Therapies